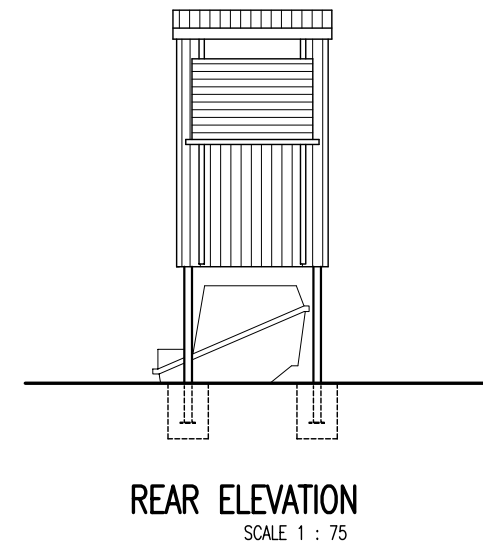


**NOTE**

- STRUCTURE HAS BEEN DESIGNED IN ACCORDANCE WITH THE FOLLOWING AUSTRALIAN STANDARDS AND REFERENCES :-  
AS 1170.1 , AS 1170.2, AS 3600 AS 4100 .  
( REGION A, TERRAIN CATEGORY 2 MAX WIND VEL 41m/sec ULS)
- THE FOOTING HAS BEEN DESIGNED ASSUMING SITE CLASSIFICATION OF S OR M WITH AN ALLOWABLE SOIL BEARING PRESSURE OF 100kPa, AND SOIL ADHESION OF 10kPa.  
( TO BE VERIFIED ON SITE BY OTHERS )



REVISION		DATE	© Copyright of Clivus Multrum Designs  <b>CLIVUS MULTRUM AUSTRALIA</b> A.B.N. 77 592 410 497 115 Railway Avenue, STRATHPINE Qld 4500 Tel : 07 3889 6144 Fax : 07 3889 6149	CLIENT	SCALE	AS NOTED	A3	DRAWING TITLE		
1				<b>CLIVUS MULTRUM AUSTRALIA</b>	DRAWN	MAF		DATE	18-08-04	<b>PLAN &amp; ELEVATIONS</b>
2				<b>AMENITIES BLOCK</b>	PROJECT	APPROVED	DATE		DWG. No.	H2798-101
3					SERIES	CUSTOM ROMA		REV	0	
4										
5										
6										