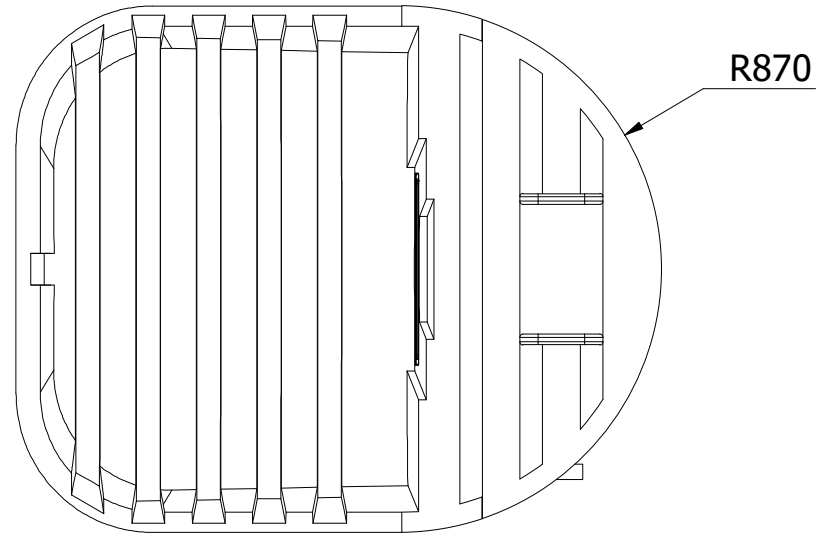
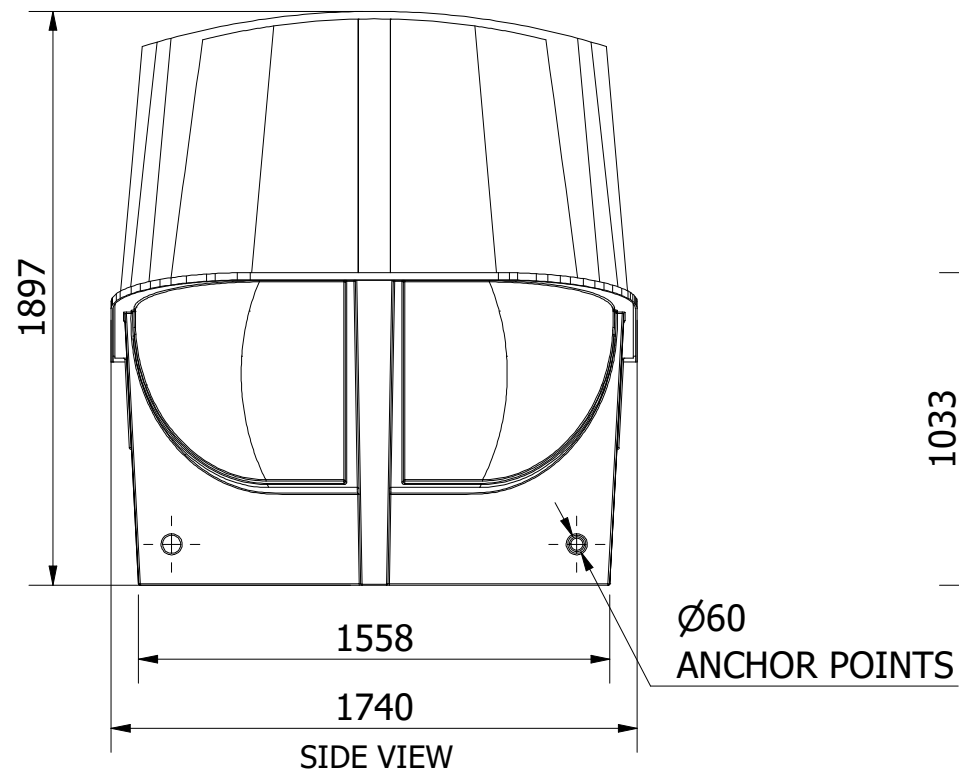


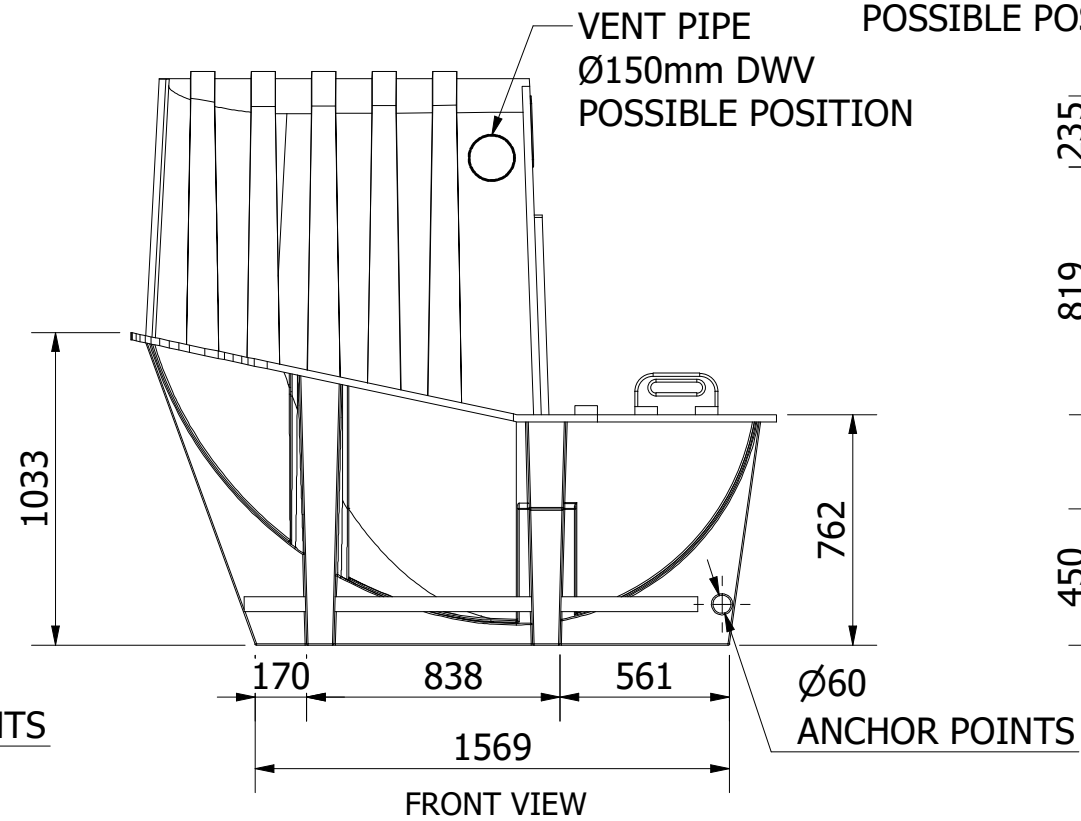
NOTE:  
1. MANUFACTURING TOLERANCE  $\pm 2\%$



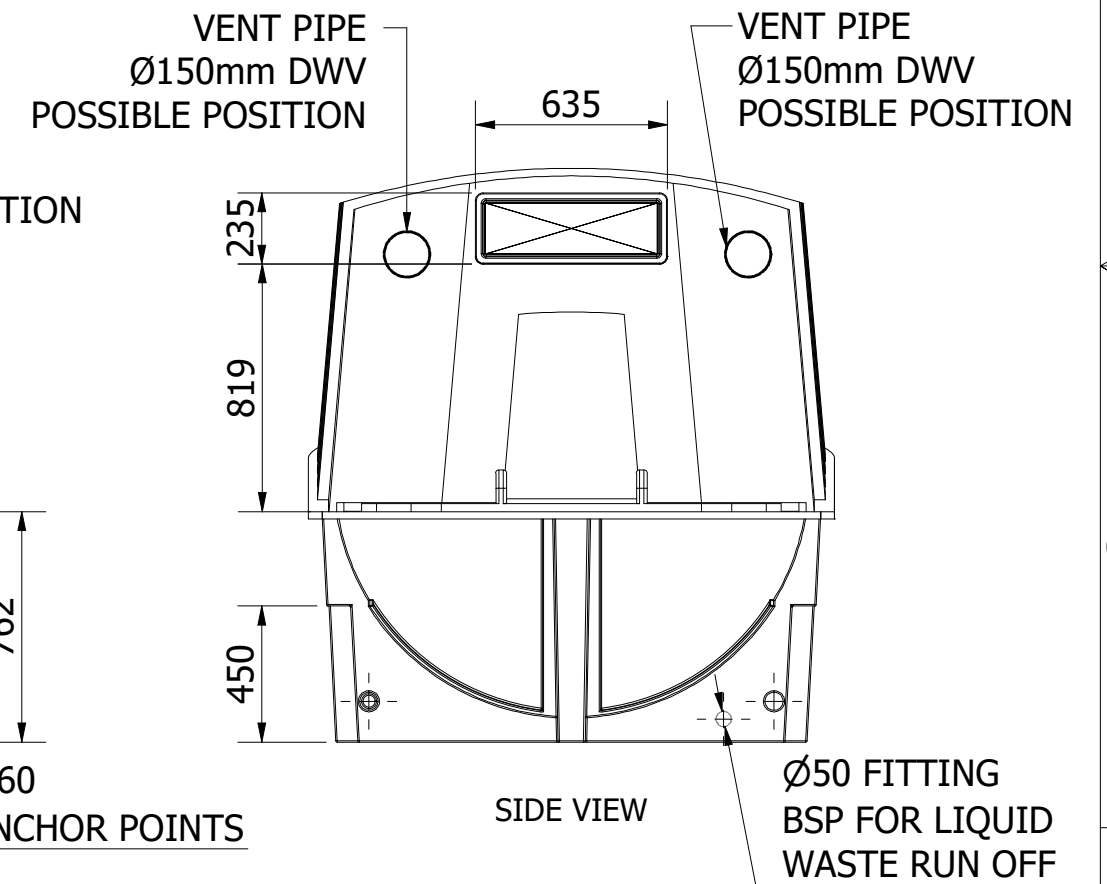
TOP VIEW



SIDE VIEW



FRONT VIEW



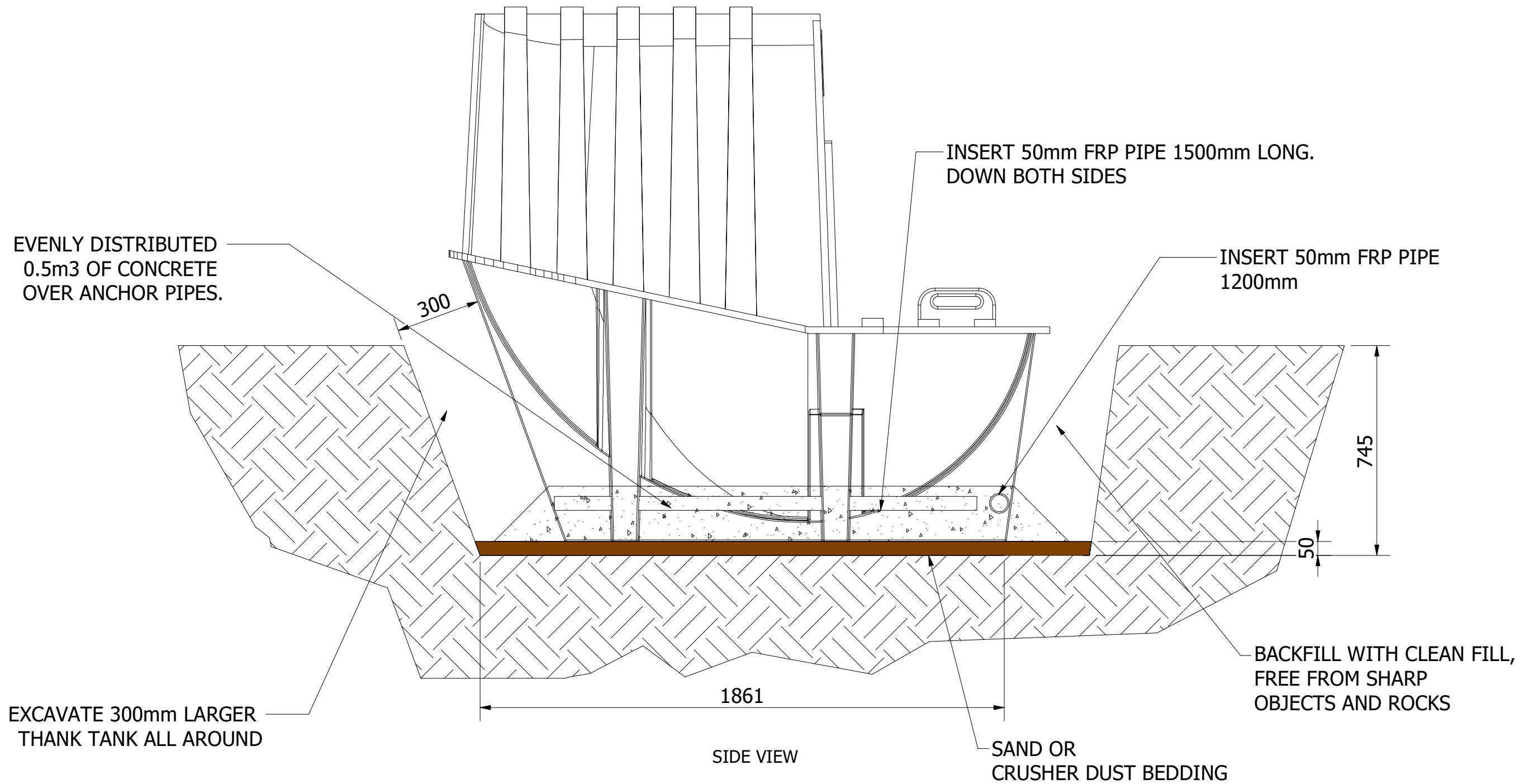
SIDE VIEW



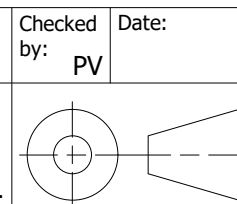
Designed by: EPU	Date:	Checked by: PV	Date:	Client: ECOFLO WASTEWATER MANAGEMENT	A3
© COPYRIGHT ECOFLO IF IN DOUBT ASK DO NOT SCALE ALL DIMS IN mm U.N.O. AS1100				DWG Title: CM40 GENERAL ASSEMBLY	SHEET 1 of 4
				Job No:	Rev A
				DWG No: CM-40-G-AS	

Z:\9.0 R&D\9.36. CM40 Next Gen\1. CM-40-P-TT\Product Part\CM-40-GPD-AS.idw

- NOTES:
1. INSERT ANCHOR PIPES BEFORE LOWERING THE TANK INTO THE PIT
  2. MAXIMUM BURY DEPTH 720mm
  3. ENSURE THE TANK IS PLACED ON A FIRM STABLE SUBSOIL
  4. USE CLEAN FILL, FREE FROM SHARP OBJECTS AND ROCKS



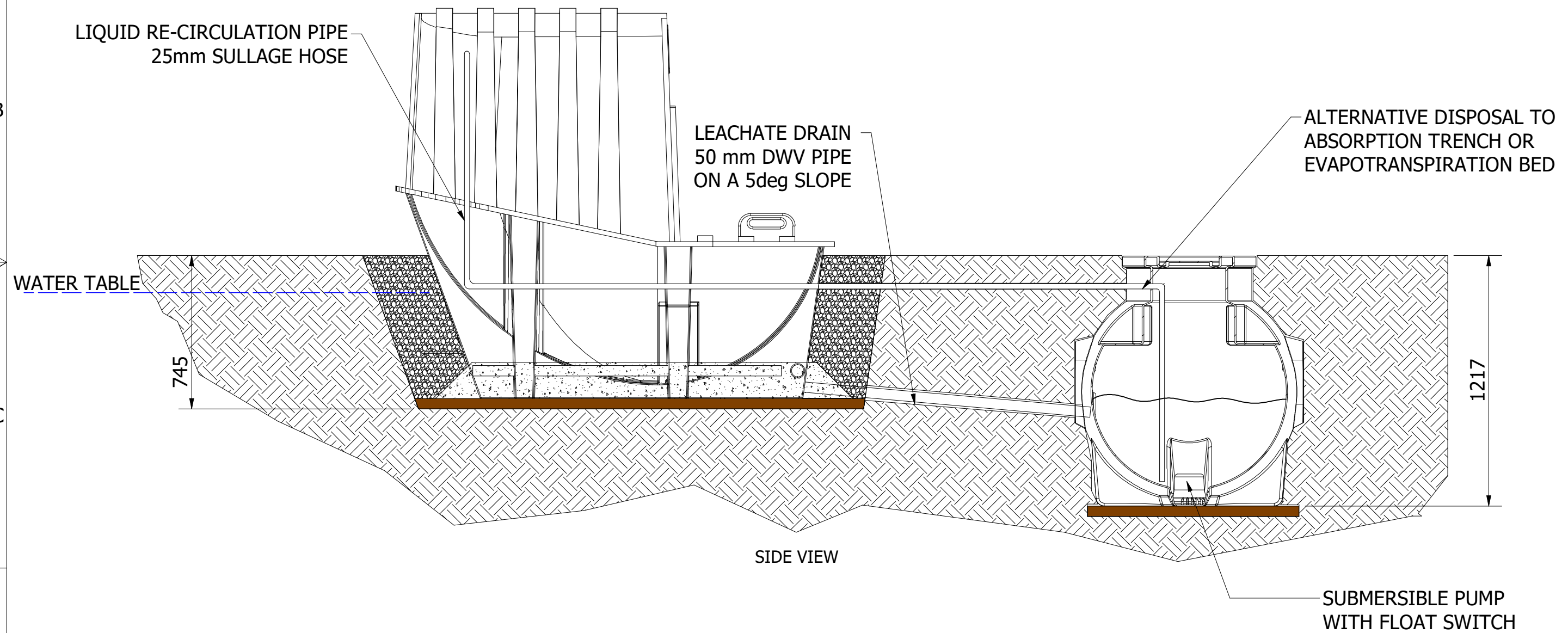
Designed by: EPU  
Date:   
© COPYRIGHT ECOFLO  
IF IN DOUBT ASK  
DO NOT SCALE  
ALL DIMS IN mm U.N.O.  
AS1100



Client: ECOFLO WASTEWATER MANAGEMENT  
DWG Title: CM40 TANK BURIED INSTALLATION IN HIGH WATER TABLE  
Job No:   
DWG No:   
CM-40-G-AS

A3  
SHEET 2 of 4  
Rev A

- NOTES:
1. SEE DRAWING CM-40-G-AS SHEET 2 OF 4 FOR ANCHOR DETAILS
  2. REFER TO PUMPWELL INSTALLATION MANUAL



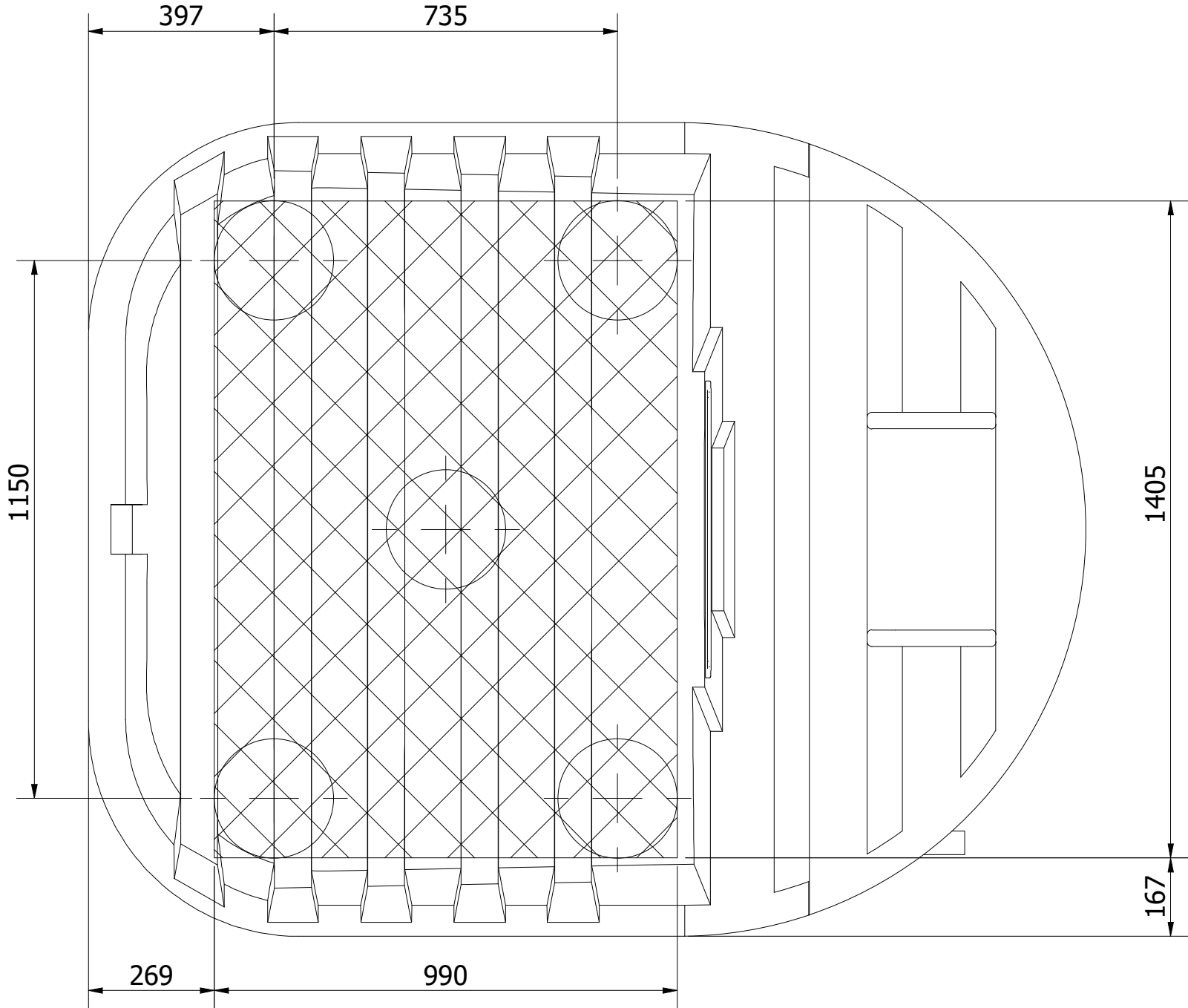
Designed by: EPU  
Date:  
© COPYRIGHT ECOFLO  
IF IN DOUBT ASK  
DO NOT SCALE  
ALL DIMS IN mm U.N.O.  
AS1100

Checked by: PV  
Date:

Client: ECOFLO WASTEWATER MANAGEMENT  
DWG Title: CM40 TANK LEACHATE DRAIN IN HIGH WATER TABLE  
Job No: DWG No: CM-40-G-AS

A3  
SHEET 3 of 4  
Rev A

- NOTES:
- 1. HATCHING INDICATES RECOMMENDED AREA FOR CHUTE LOCATION
  - 2. FOR SINGLE PEDESTAL, OPTIMUM POSITION IS CENTRAL IN HATCHED AREA
  - 3. MANUFACTURING TOLERANCE  $\pm 2\%$



TOP VIEW



Designed by: EPU	Date:	Checked by: PV	Date:	Client: ECOFLO WASTEWATER MANAGEMENT	A3
© COPYRIGHT ECOFLO IF IN DOUBT ASK DO NOT SCALE ALL DIMS IN mm U.N.O. AS1100				DWG Title: CM40 PEDESTAL LOCATION	SHEET 4 of 4
				Job No:	Rev A
				DWG No:	CM-40-G-AS

Z:\9.0 R&D\9.36. CM40 Next Gen\1. CM-40-P-TT\Product Part\CM-40-GPD-AS.idw